

AEROPRAKT SERVICE BULLETIN

No. SB A32-16

CHANGE OF AIRSPEED INDICATOR MARKING IN A32 AIRCRAFT

Repeating symbols:

Please, pay attention to the following symbols throughout this document marking important information.

- ▲ **WARNING:** Identifies an instruction, which if not followed may cause serious injury or even death.
- **CAUTION:** Denotes an instruction, which if not followed, may cause severe damage.
- ◆ **NOTE:** Information useful for better handling.

Release date: 21.10.2022

Effective date: 21.10.2022

Completion date:

Superseded notice: none

Model: A32

Serial number(s) affected:

A32 aircraft serial No. 001-071, 074, 076-078, 080, 082, 083, 085-091, 094, 097, 101-103, 106, 107, 109-111, 114-117, 125, 128, 129, 131, 139-144, 146, 147, 151-153, 156, 158, 160, 161, 163, 164, 168, 169, 171, 172, 176, 179, 180-184, 186, 189, 193, 194, 197, 201-205, 207-209, 212-222, 226-230, 232, 234-238, 241, 244-249, 251-253

1) Planning information**1.1) Aircraft affected**

A32 aircraft serial No. 001-071, 074, 076-078, 080, 082, 083, 085-091, 094, 097, 101-103, 106, 107, 109-111, 114-117, 125, 128, 129, 131, 139-144, 146, 147, 151-153, 156, 158, 160, 161, 163, 164, 168, 169, 171, 172, 176, 179, 180-184, 186, 189, 193, 194, 197, 201-205, 207-209, 212-222, 226-230, 232, 234-238, 241, 244-249, 251-253.

1.2) Reason

Bringing the airspeed indicator marking in compliance with the requirements of ASTM F2245.

1.3) Subject

Change of airspeed indicator marking in A32 aircraft.

1.4) Compliance

Compliance with this Service Bulletin is recommended for increasing the still air speed limit.

1.5) Approval

The technical content of this Service Bulletin has been approved by Aeroprakt.

1.6) Manpower

Estimated work: modification according to the paragraph 3 can be done within 1 hour.

1.7) Mass data

Mass change – none.

1.8) Revision of other documents

Pilot Operating Handbook, Airspeeds and Airspeed Indicator markings.

1.9) Spare parts

None.

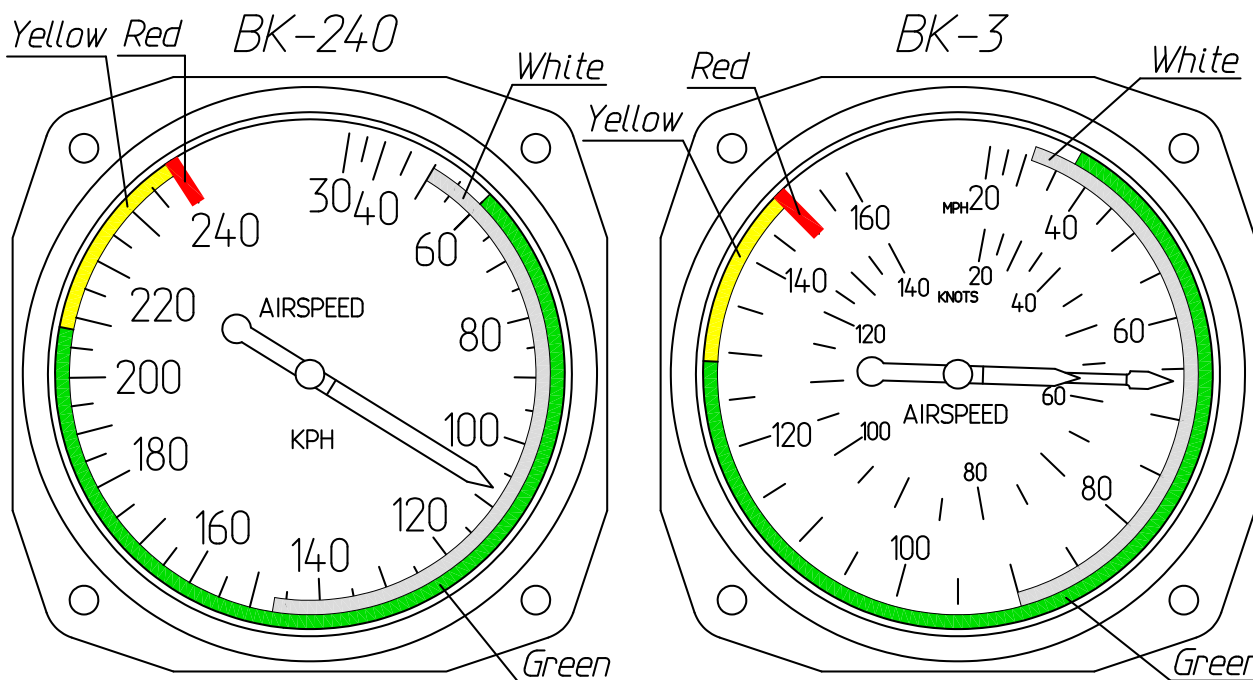
2) Spare parts information

None.

3) Accomplishment / Instructions

3.1) Change the airspeed indicator marking

Change the airspeed indicator colour marking as shown on the picture below.



Make respective corrections in the Pilot Operating Handbook (POH) section **2.1 Airspeeds and Airspeed Indicator markings**, by erasing (or crossing out) the text crossed out and writing over the text underlined in the table below.

Marking	IAS value or range, km/h (kts)	Airspeed (range) symbol(s) and description
White arc start	50 (27)	V_{S0} – stalling speed at maximum takeoff weight with full flaps
Green arc start	60 (32)	V_S – stalling speed at maximum takeoff weight with flaps up
White arc	50 – 147 (27 – 79)	V_{S0} to V_{FE} – flap extended speed range
Green arc	60 – 151 <u>208</u> (32 – 82 <u>112</u>)	V_S to V_{ORA} – normal operating speed range
Green and Yellow arcs border	151 <u>208</u> (82 <u>112</u>)	V_{ORA} – operating maneuvering rough air speed at gross weight and minimum weight
Yellow arc	151 <u>208</u> – 240 (82 <u>112</u> – 130)	V_{ORA} to V_{NE} – in this range maneuvers must be conducted with caution and only in smooth air
Red line	240 (130)	V_{NE} – never-exceed speed, maximum speed for all operations